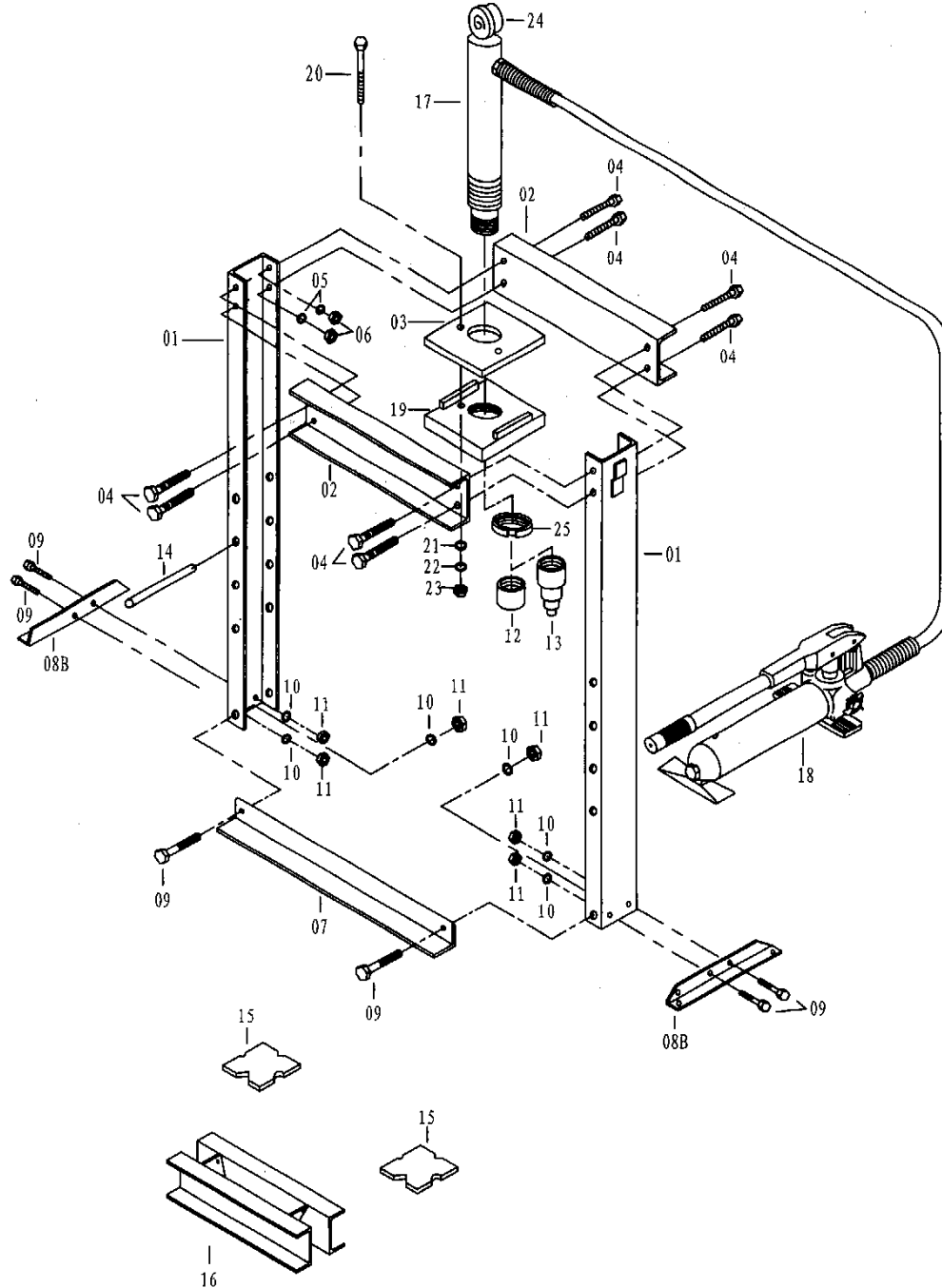


Parts List

10 Ton Bench Press:



10 Ton Bench Press Parts List			
Ref #	Part #	Description	Quantity
1	301139	Frame Upright Channel	2
2	301138	Head Frame Channel	2
3	301137	Head Ram Traverse Plate	1
4	301136	Bolt M12 x 110mm	6
5	301135	Lock washer 12mm	6
6	301134	Nut M12 x 4	6
7	301132	Union Support	1
8	301131	Base Angle	2
9	301130	Bolt M8 x 20	6
10	301129	Lock Washer 8mm	6
11	301128	Nut M8	6
12	301127	Flat Nose Piece	1
13	301126	Step Nose Piece	1
14	301125	Table Pin	2
15	301124	Table Plate	2
16	301123	Worktable	1
17	301122	Ram / Cylinder	1
17A	302382	Cylinder Spring	1
18	301121	Pump Unit	1
19	301133	Head Ram Traverse Plate	1
20	301150	Bolt M10 x 140	2
21	302277	Washer 10mm	2
22	301149	Lock Washer 10mm	2
23	301141	Nut 10mm	2
24	302019	Gauge (Original)	1
25	302276	Ring	1

Items Not Shown	
Part #	Description
302318	Cylinder Seal kit
302382	Spring for cylinder
302310	Fitting Nipple
302309	Fitting Coupler
302554	Pump repair kit
302508	Hydraulic hose w/Coupling
302019	10 Ton Gauge
302019C	10 Ton Certified Gauge
302596	0-5000lbs. Gauge
302777	Max Hand Gauge 1-10 Ton