



10 MACHINE COMPONENTS

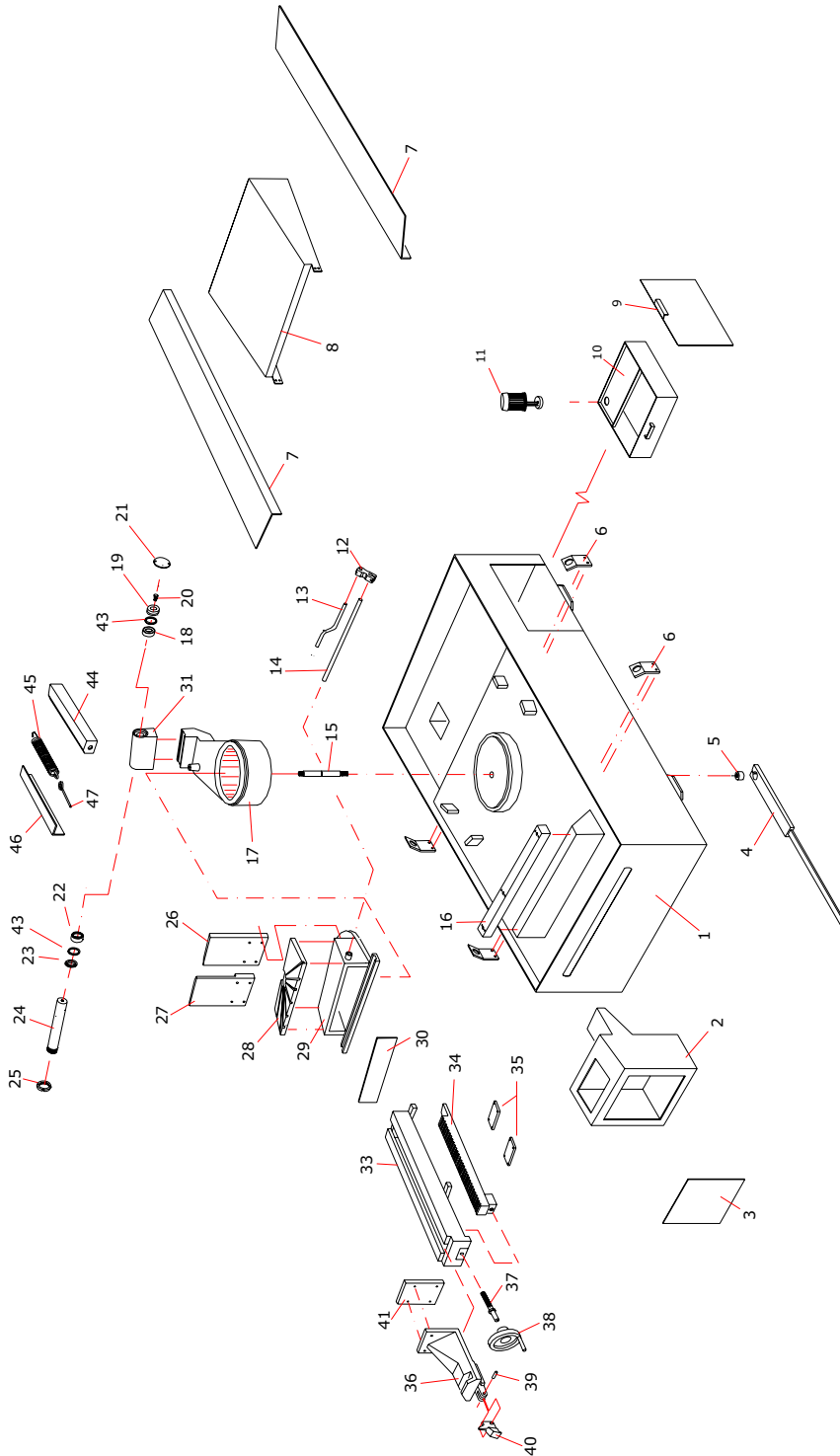
10.1 - List of spare parts

REFERENCE NUMBER	DENOMINATION
1	Bedframe
2	Electric box
3	Electric box cover
4	Revolving arm lock lever
5	Arm lock bush
6	Machine hoisting hook
7	Crucible
8	Hydraulic unit cover
9	Cover
10	Refrigerating liquid tank
11	Electropump
12	Bar stop body
13	Bar stop push rod
14	Bar stop rod
15	Revolving arm pin
16	Vice support
17	Revolving arm
18	Bearing 32008 X
19	Bushing
20	Screw
21	Hinge pin protection
22	Bearing 32008 X
23	Spacer
24	Hinge pin
25	Ring nut Guk M 40 x 1,5
26	Countervise r.h. jaw
27	Countervise l.h. jaw
28	Interchangeable plate
29	Countervise
30	Countervise anterior guard
31	Hinge pin support
32	
33	Vice support
34	Rack
35	Rack support
36	Vice
37	Vice screw
38	Vice handwheel
39	Pin
40	Pawl
41	Vice jaw
42	
43	Ring NILOS 32008 XAV
44	spring support
45	Spring
46	

REFERENCE NUMBER	DENOMINATION
60	Saw frame
61	Electric motor
62	Speed variator
63	Speed variator handwheel
64	Ring nut M 35 x 1,5
65	Speed reducer
66	Spacer
67	Cylinder sawframe superior attachment
68	Spacer flange
69	
70	Microswitch
71	Cylinder sawframe inferior attachment
72	Pin
73	Pin
74	Hydraulic cylinder (SA GDS version)
75	Adjustable screw
76	Transmission flywheel pin
77	Ring nut Guk M 30 x 1,5
78	Blade tightening slide
79	Microswitch
80	Microswitch support plate
81	Handgripp
82	Blade tightening handwheel pin
83	Blade tightening handwheel
84	Blade tightening pin
85	Spring
86	Bracket
87	Ring NILOS 32006 XAV
88	Bearing 32006 X
89	Transmission flywheel
90	Ring nut Guk M 30 x 1,5
91	Bearing 6308 2RS
92	Ring NILOS 6308 AV
93	Bearing guard
94	Motor flywheel shaft
95	Motor flywheel
96	Cone clamping EURONIC CN 54/S
97	Blade guide protection
98	Microswitch
99	R.h. flywheel protection
100	L.h. flywheel protection
101	Blade guide arm guide
102	Blade guide arm
103	
104	Hand lever



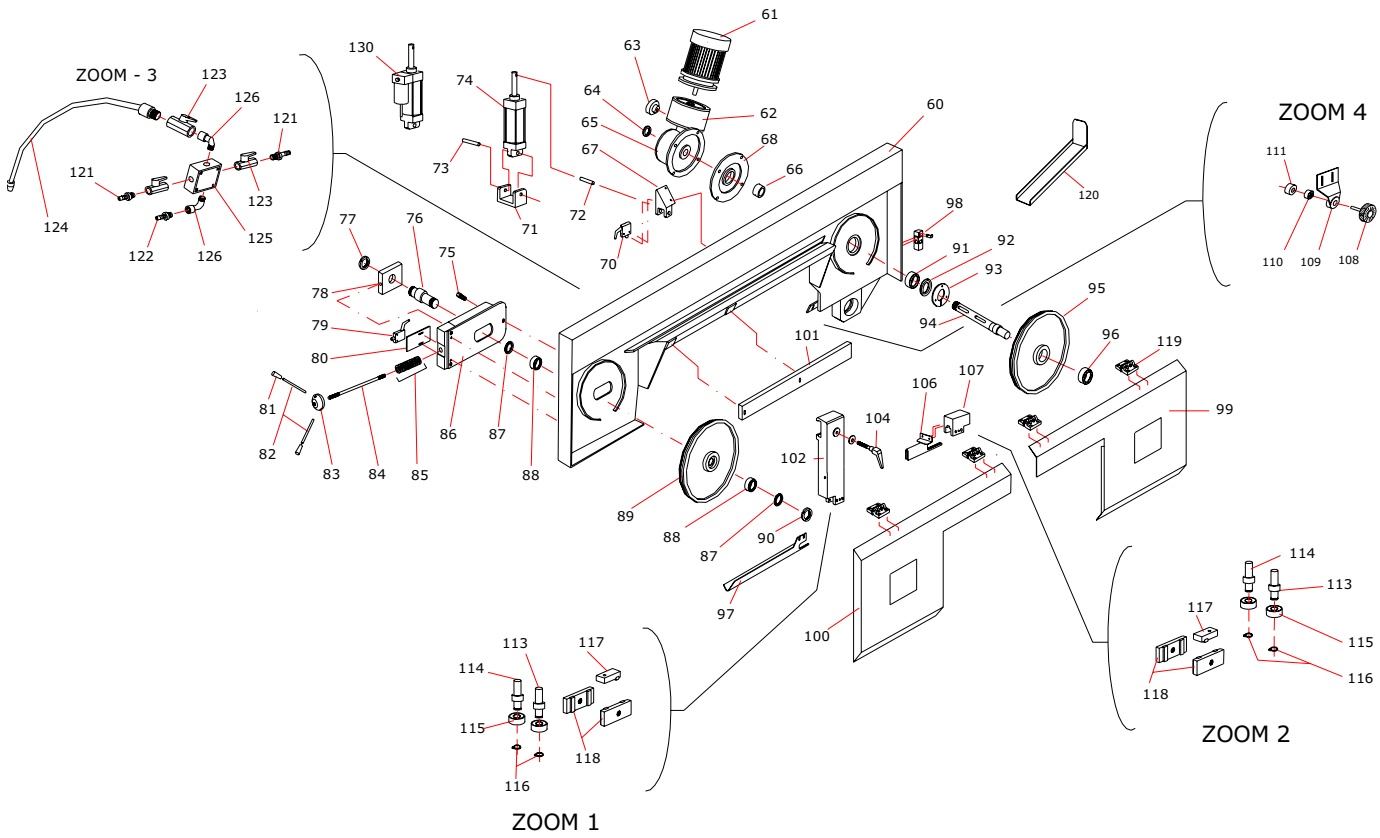
REFERENCE NUMBER	DENOMINATION
105	
106	Additional protection
107	Fixed blade guide block
108	Blade cleaning brush
109	Brush support
110	Bearing 626
111	Bush
112	
113	Short eccentric pin
114	Long eccentric pin
115	bearing 608 2RS
116	ring seeger
117	Upper blade guide pad
118	Side blade guide pad
119	
120	Crucible
121	Coupling
122	Coupling
123	Cooling liquid cock
124	Flexible tube
125	Cooling distributor
126	Coupling
127	
128	
129	
130	Bracke cylinder (GDS version)





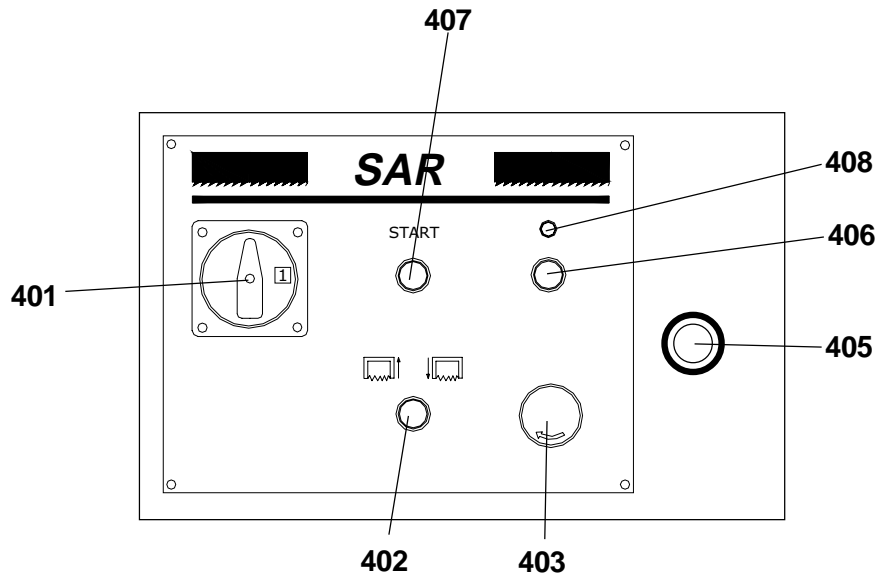
THOMAS

SAR 331 SA GDS



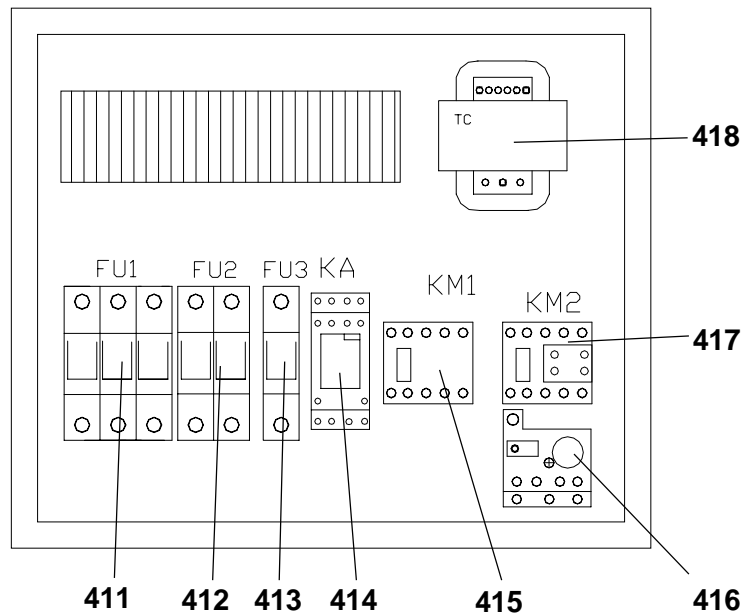
KEY:

- 401 Main switch
- 402 Frame movement selector
- 403 Emergency pushbutton
- 404 Frame lowering regulator
- 405 Line pushbutton
- 407 Cycle start pushbutton
- 408 Indicator light



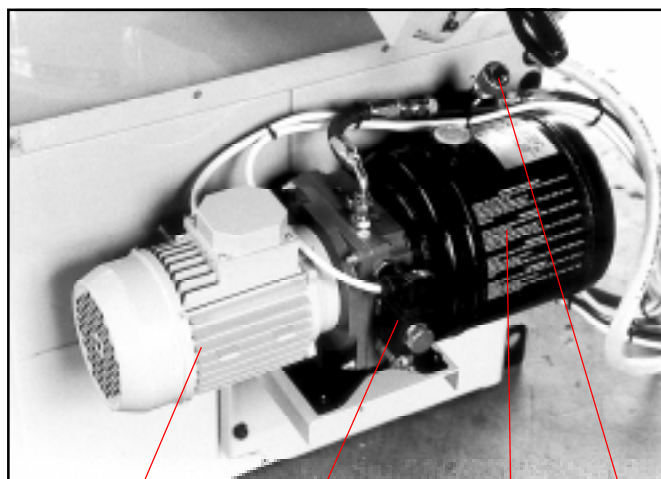
KEY:

- 411 Fuse holders (FU 1)
- 412 Fuse holders (FU 2)
- 413 Fuse holders (FU 3)
- 414 Relay
- 415 Hyd. switchboard motor teleswitch
- 416 Belt motor circuit breaker
- 417 Belt motor teleswitch
- 418 Transformer



KEY:

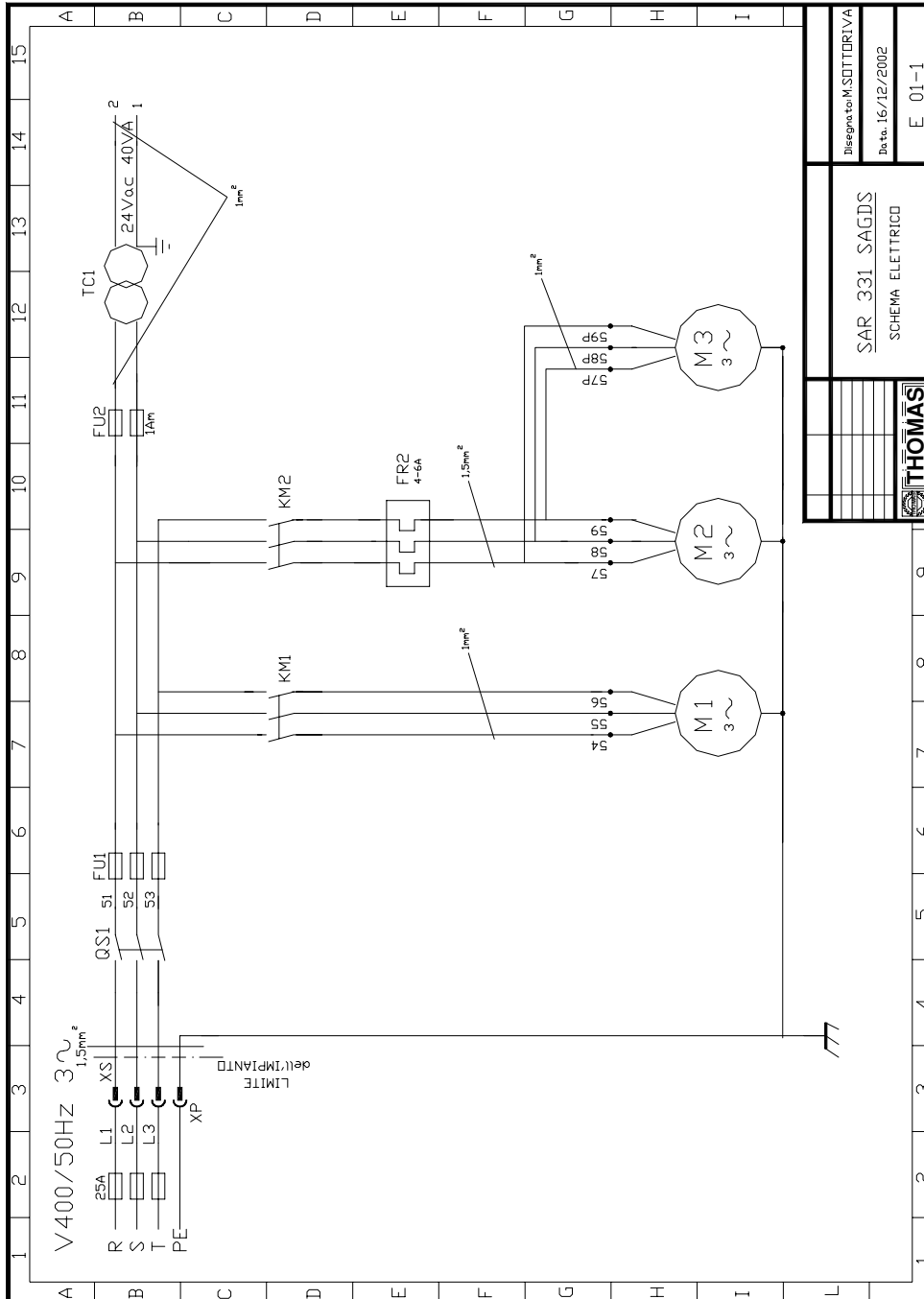
- 421 Hyd. switchboard motor
- 422 Solenoid valve
- 423 Hyd. switchboard casing
- 424 Regulator



421 422 423 424

11 ELECTRIC DIAGRAM

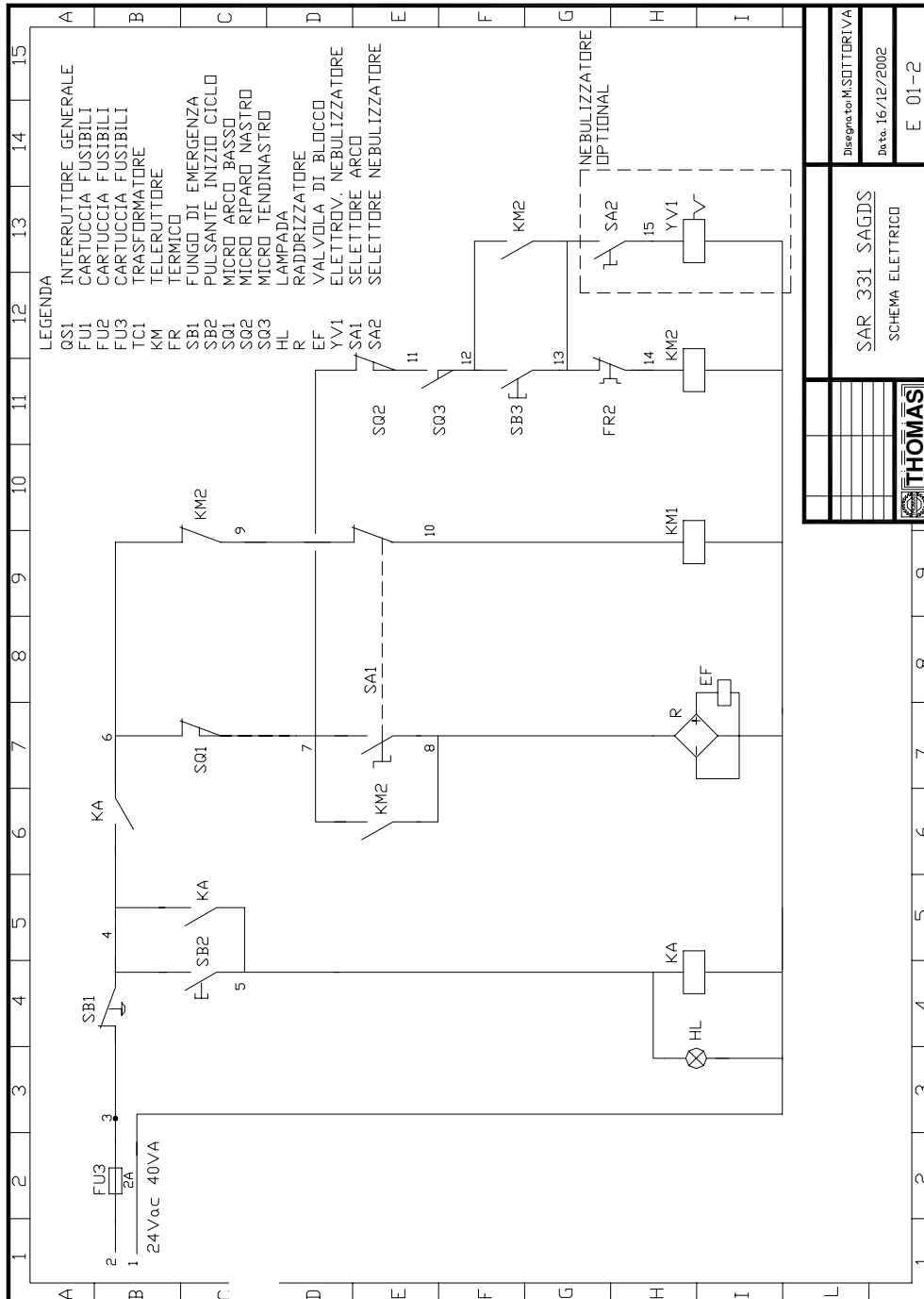
11.1 - Three-phase electric diagram



- | | | | |
|-----|----------------------------------|-----|---------------------|
| QS1 | Main switch | M1 | Motor gear case id. |
| FU1 | Fuse cartridge | M2 | Belt motor |
| KM1 | Central motor control switch id. | M3 | Motor pump |
| KM2 | Motor belt control switch | FU2 | Fuse cartridge |
| FR2 | Thermal motor belt | TC1 | Transformer |

Disegnata da M. SOTTORIVA	
Data: 16/12/2002	
SAR 331 SA GDS	
SCHEMA ELETTRICO	
E 01-1	





Disegnata M. SOTTORIVA	
Da ca. 16/12/2002	
E 01-2	
SAR 331 SA GDS	
SCHEMA ELETTRICO	

- | | | | |
|-----|------------------|-----|---------------|
| FU3 | Fuse cartridge | SQ1 | Dip-switch |
| SB1 | Emergency switch | SA1 | Arch selector |
| SB2 | On-line switch | EF | RC coil |
| KA | Relay | SQ2 | Dip-switch |
| HL | Pilot light | SQ3 | Dip-switch |

