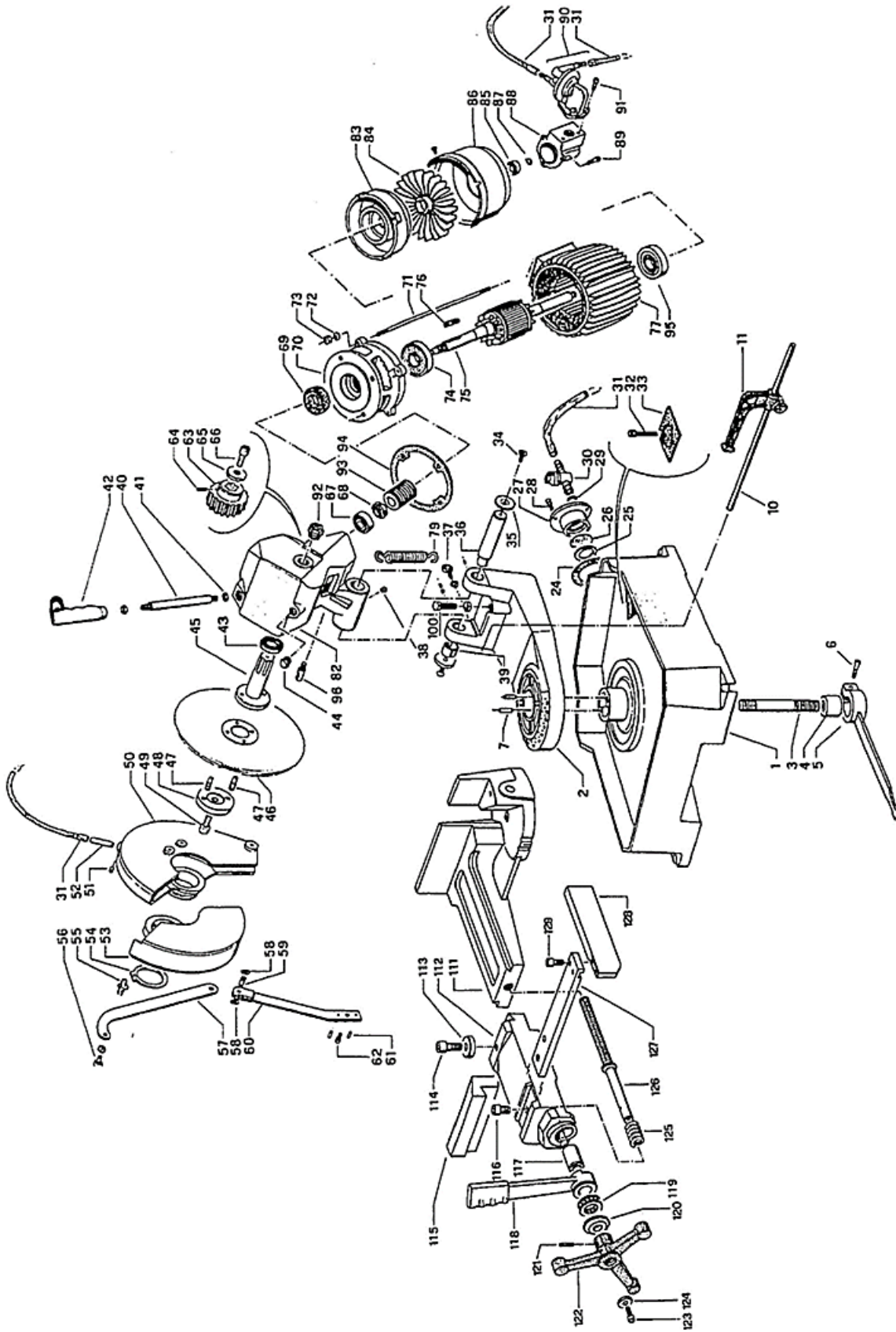
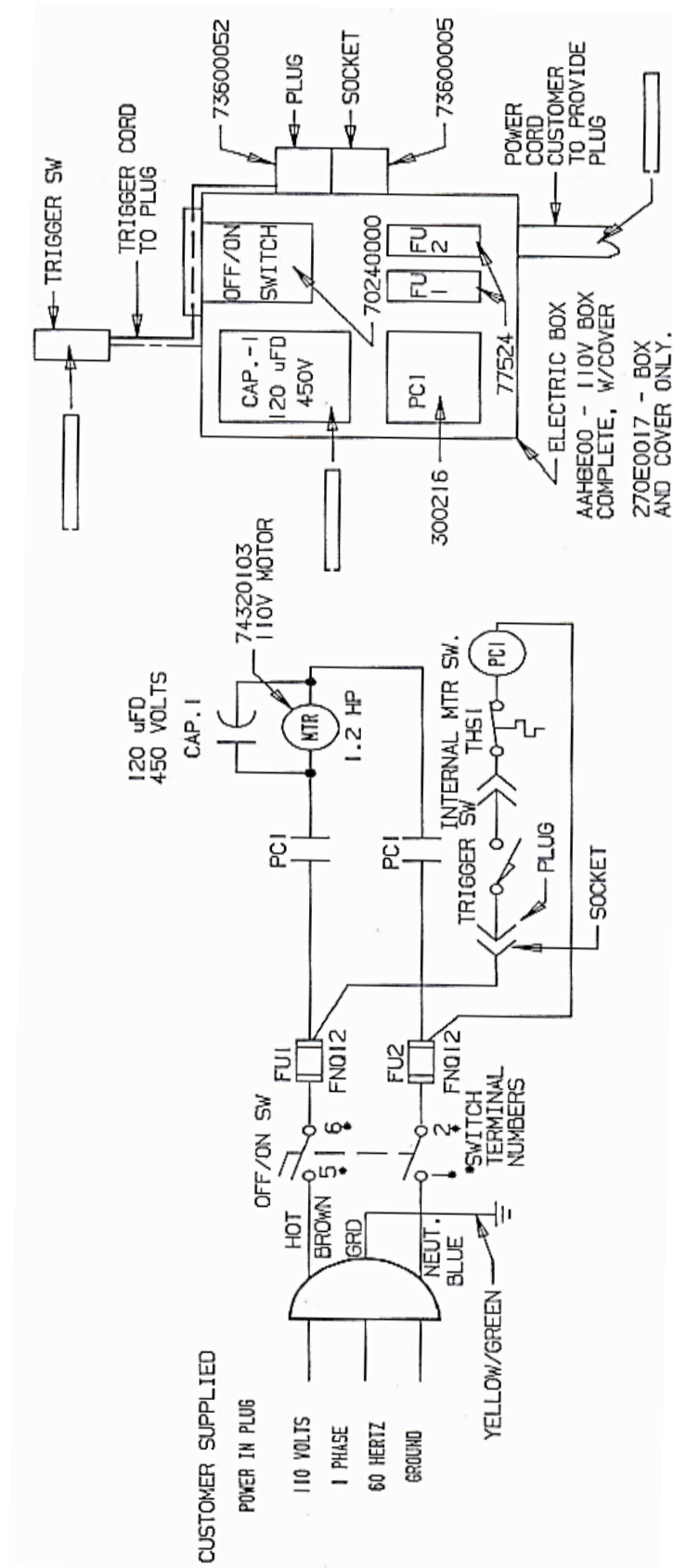


EXPLODED VIEW



ELECTRICAL DIAGRAM



PART LIST

<u>Item</u>	<u>Part Name</u>	<u>Part No.</u>
1	Pedestal	302983
2	Revolving Arm	AG190046
3	Revolving Arm Lock Pin	303041
4	Revolving Arm Lock Bushing	303042
5	Revolving Arm Lock Lever	AG160022
6	Screw (M8-2.25 x 20mm)	80521
7	Pin (Ø 6mm x 36mm)	82504217
10	Stock Stop Rod	AFC10047
11	Stock Stop	ANC10046
12	Quick Lock Vise	302823
14	Screw M12	81110133
15	Vise Jaw Washer	AFB8B037
16	Screw M12	81110133
18	Vise Adjusting Handwheel	47100000
22	Socket Cap Screw (M8-1.25 x 20mm)	80521
24-27	Filter Support Flange Assembly	ANC10071
28	Socket Head Cap Screw (M5 x 12mm)	64180
29	Washer (8.5mm ID x 21mm OD)	82100000
30	Coolant Flow Control Valve	88600000
31	Coolant Feed Tube	69102002
32	Screw (M6-1.0 x 60mm)	303043
33	Coolant Reservoir	AFB80044
34	Hex Cap Bolt (8mm x 1.25 x 55mm)	302413
35	Motor Fly Wheel Washer	D80C0083
36	Hinge Pin	303011
37	Spring Tie-Rod	302851
39	Hinge Pin Bushing	303290
40	Head Pull Handle	AF190052
41	Hex. Nut (M16)	81600016

<u>Item</u>	<u>Part Name</u>	<u>Part No.</u>
65	Vise Jaw Washer	AFB8B037
66	Socket Head Bolt (M12-1.75 x 25mm)	303039
67	Bearing (6031)	84101027
68	Ring Nut (M15 x 1)	81700015
69	Bearing	302901
70	Front Motor Flange	302899
79	Head Return Spring	AFC10021
82	Head	303291
83	Rear Motor Flange	AHH80005
84	Motor Fan	74310007
85	Eccentric Bearing (609)	84101016
86	Fan Cover	AHH8006
87	Retaining Ring (M10)	303289
88	Coolant Pump Housing	AG190044
89	Socket Head Cap Screw (M6-1.0 x 20mm)	64179
90	Coolant Pump	8814100
91	Socket Head Cap Screw (M6-1.0 x 20mm)	64179
92	Oil Plug	88302002A
93	Worm Screw	AF180015
94	Motor to Gear Box Gasket	ANC10002
96	Spring Connector	AFC10024
100	Hex. Cap Screw (M10-1.5 x 30mm)	81505
112	Quick Lock Vice	302823
113	Vise Jaw Washer	AFB8B037
114	Socket Head Bolt (M12-1.75 x 25mm)	303039
115	Vise Jaw	303040
116	Socket Head Bolt (M12-1.75 x 25mm)	303039
117	Lever Bushing	AFB80032
118	Quick Lock Vice Lever	AGB80031

<u>Item</u>	<u>Part Name</u>	<u>Part No.</u>
42	Handgrip	44600001
43	O-Ring (ID 30mm x OD 40mm)	86001049
44	Oil Plug	88302002
45	Spindle	AFC10010
47	Drive Pins	AFC10013
48	Blade Flange	AFC10011
49	Socket Cap Screw (M12-1.75 x 35mm)	S1110136
50	Fixed Upper Blade Guard	AGC20085
51	Set Screw (M6 x 10mm)	78828
52	Coolant Nozzle	AFC10091
53	Lower Blade Guard	AHC20086
54	External Snap Ring	82600000
55	Blade Guard Mounting Pin	AF190092
56	Socket Cap Screw (M6 x 12mm)	80625
57-60	Blade Guard Support	AFC10088
61	Elastic Pin (Ø 5mm)	82504189
62	Socket Cap Screw (M8-1.25 x 20mm)	80521
63	Worm Gear	ABC10016
64	Socket Cap Screw (M8-1.25 x 20mm)	80521

<u>Item</u>	<u>Part Name</u>	<u>Part No.</u>
119	Bearing	84500001
120	Vice Jaw Washer	AFB80033
121	Pin (Ø6mm x 36mm)	82504217
122	Vice Handwheel	47100000
124	Washer (8.5mm ID x 21mm OD)	82100000
125	Vice Came Lever Spring	AFB80035
126	Vice Screw	99300126
127	Anti-Burr Arm	302961
131	Remote Control Switch	302961
132	Fuse Holder	73142005
133	Transformer 30VA	73327011
134	Socket Connector	73600005
135	Plug Connector	73600052
136	Main Power Shut Off	70201011
137	Reset Button	716812
138	Emergency Stop	716538
139	Electrical Box	230E0017
140	Electrical Box Cover	N/A
-	Motor, 110V Single Phase	302933
-	Hex Socket Plug	302020

Please contact factory for current prices.

ORDERING INFORMATION

Parts are available for direct purchase from Dake or through a distributor. When placing a parts order, you will need to provide the part number, name of part, and model number. All parts shipped F.O.B. Factory in Grand Haven, MI